



CANOPY CREEK
PALM CITY, FLORIDA

Custom Juniper Equestrian Elevation
 5 Bedroom, 5 Bath, Den, 3-Car Garage
 4,302 A/C sq. ft.
 4,775 Total sq.ft.
 3210 SW Goldenglow Drive
 Home Site 40

Base Price:	\$799,900
Homesite Premium:	\$ 10,000
<u>Upgrades:</u>	<u>\$141,920</u>
Total Value:	\$951,820

Total Purchase Price: \$849,900

Outstanding Features:

- Resort Style Swimming Pool w/ built in Planters
Heated Spa and Paver Deck, Overlooking Preserve
- Master Suite is downstairs
- Kitchen includes Stainless Steel Appliance Package &
Custom Cabinetry
- Dramatic 2nd story Loft Area, will accommodate a
pool table
- Home Site .642 Acres on preserve
- AND SO MUCH MORE!

Community Features:

- 5,500 sq. ft. Clubhouse w/Fitness Center
Basketball, Tennis, Kids Indoor Playroom, Kids outdoor
playground, Catering Kitchen, Wet Bar
- Gated Entry
- Heated Resort-Style Pool w/Beach Entry
- Majestic Walking Trails,
- New Elementary School w/in Walking Distance
- Public Utilities-Water, Sewer, Natural Gas



FRONT ELEVATION

Approximate delivery date: May 2009

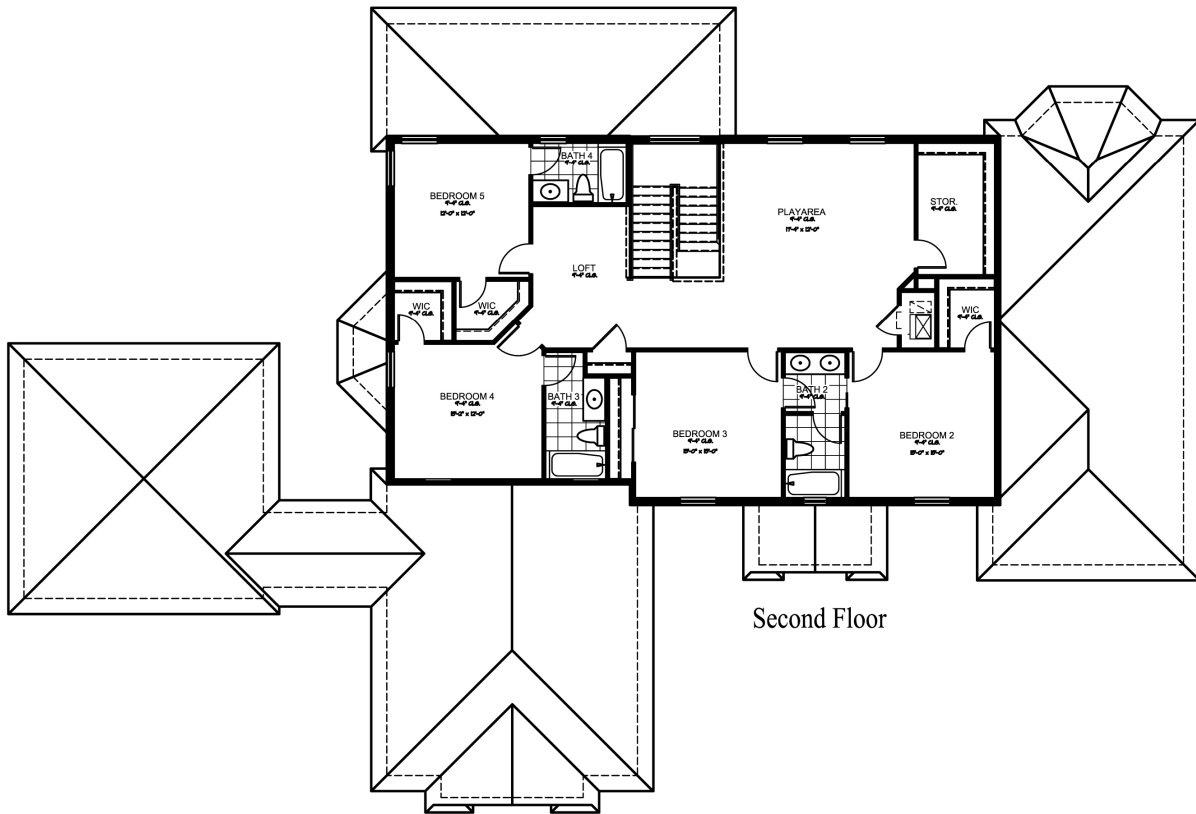
www.canopycreek.com

772.283.6440

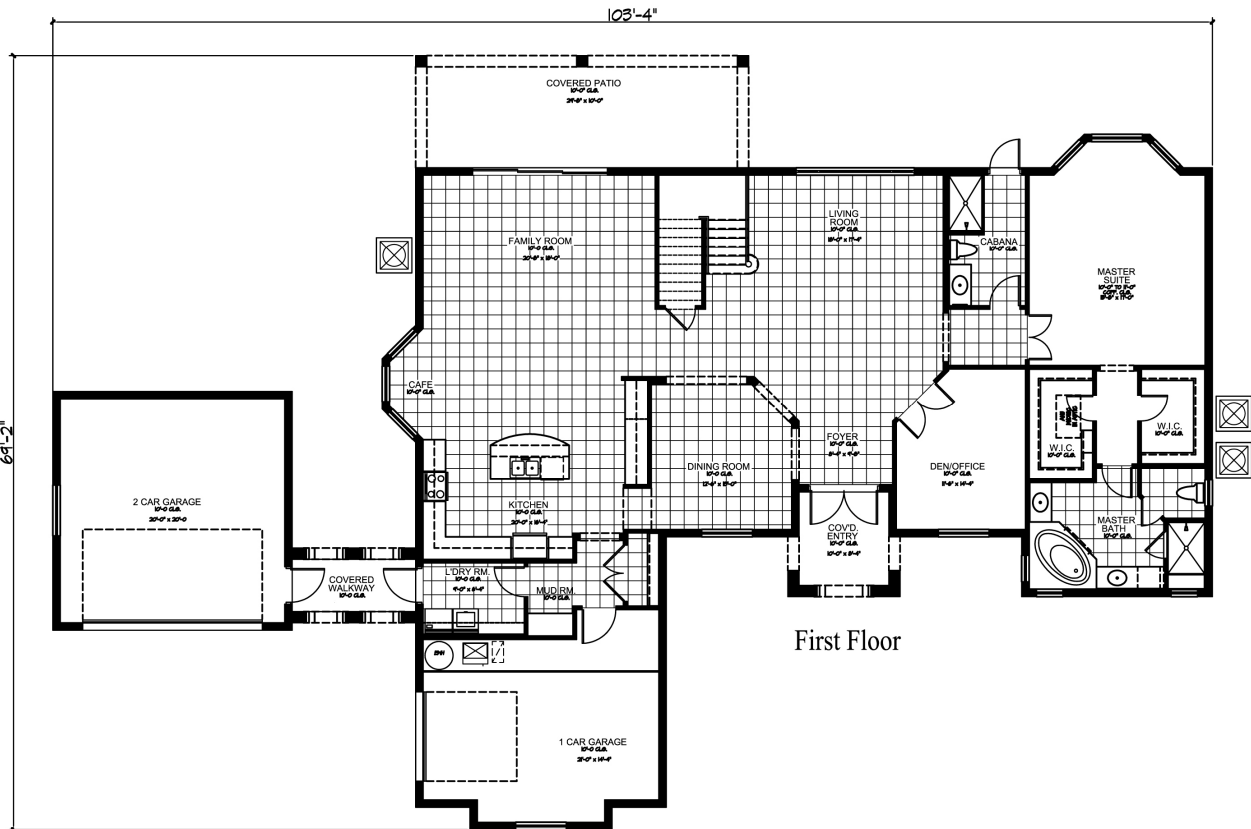
Prices, special incentives and availability are subject to change without notice. Square footage is approximate and subject to field variations.

Brokers Warmly Welcomed.





Second Floor



First Floor

Lot 40 Juniper Model - 4302 SF
5 Bedrooms, 5 Baths, Family Room, Living Room
Dining Room, Den/Office, Play Area & 3 Car Garage

DRAFT

All dimensions and specifications on this plan are preliminary, conceptual, and may not reflect final dimensions, features, and specifications. Structural, mechanical, plumbing, and electrical engineering have not been finalized and may affect the plans. Availability, pricing, and plans are subject to change without notice.